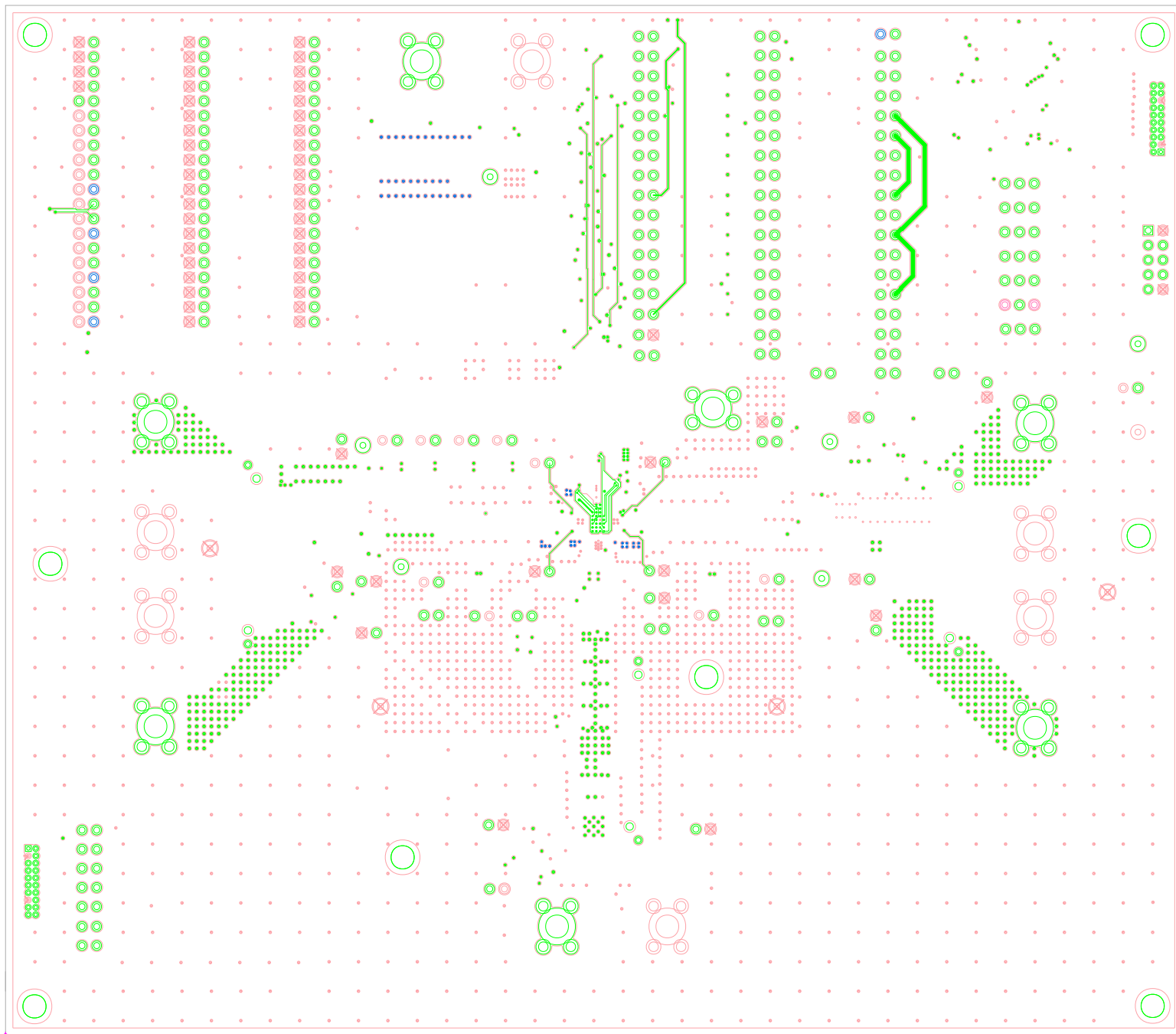
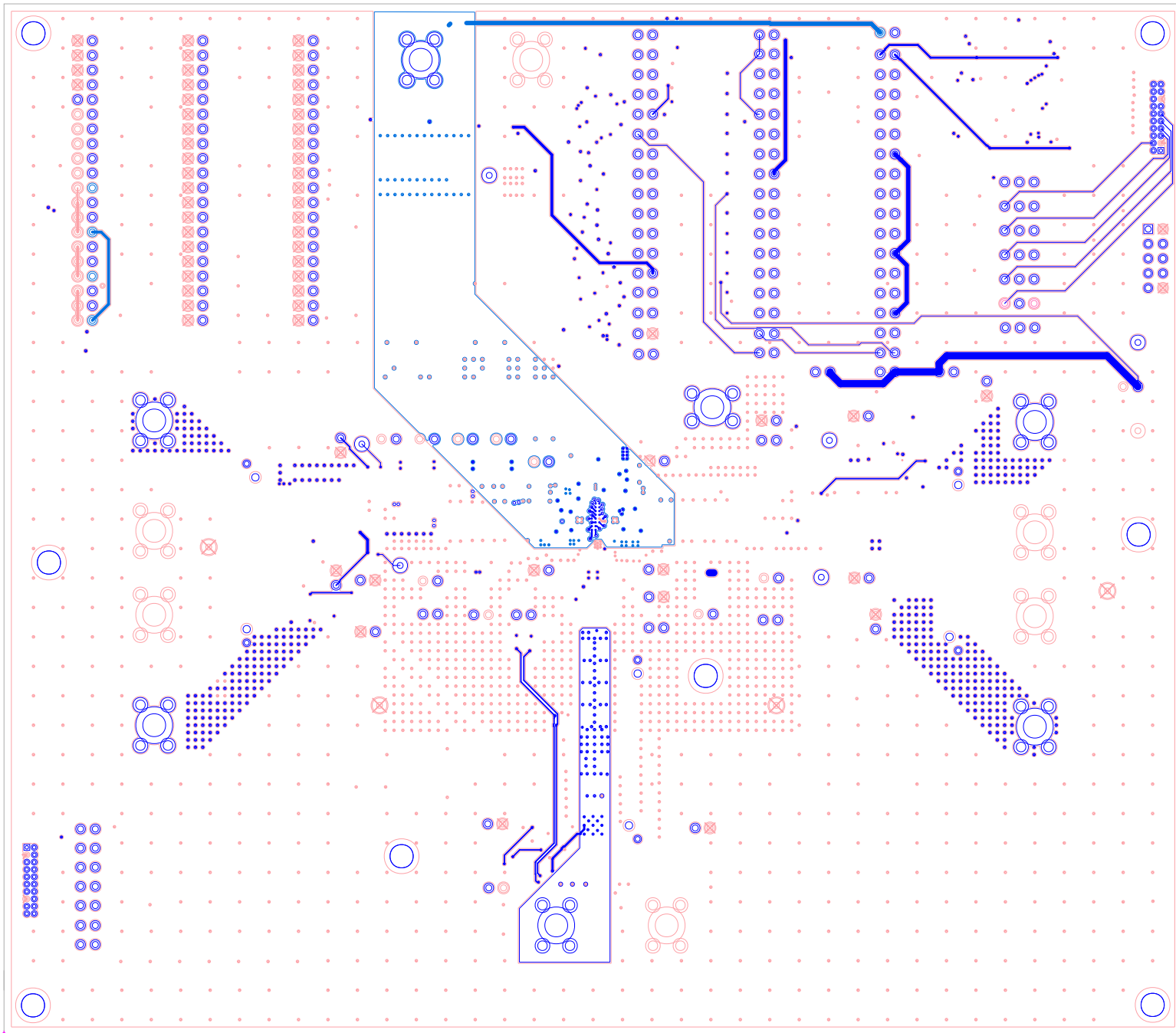


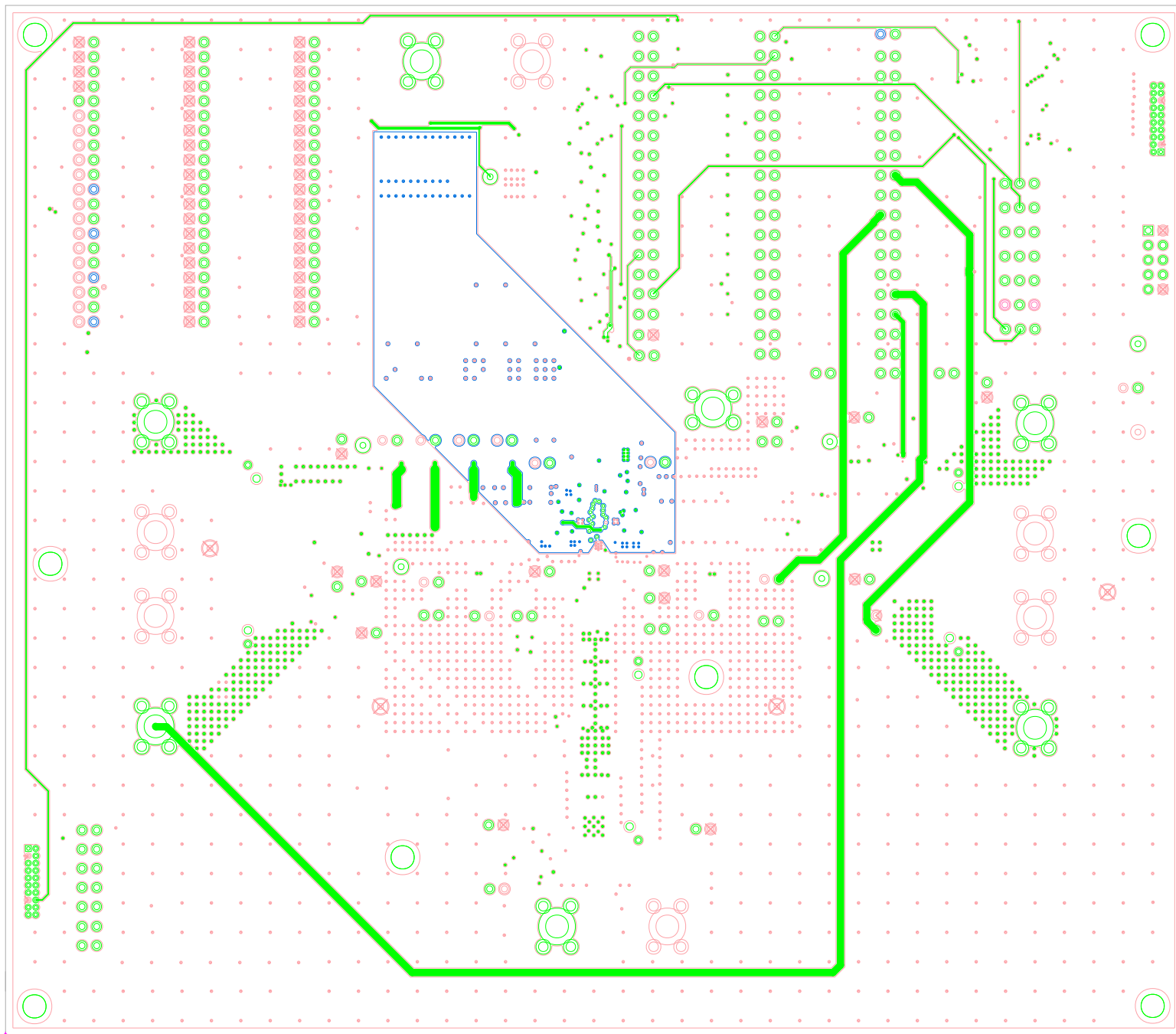
5/17/2022  
RTKA271005DE0000BU  
REV C



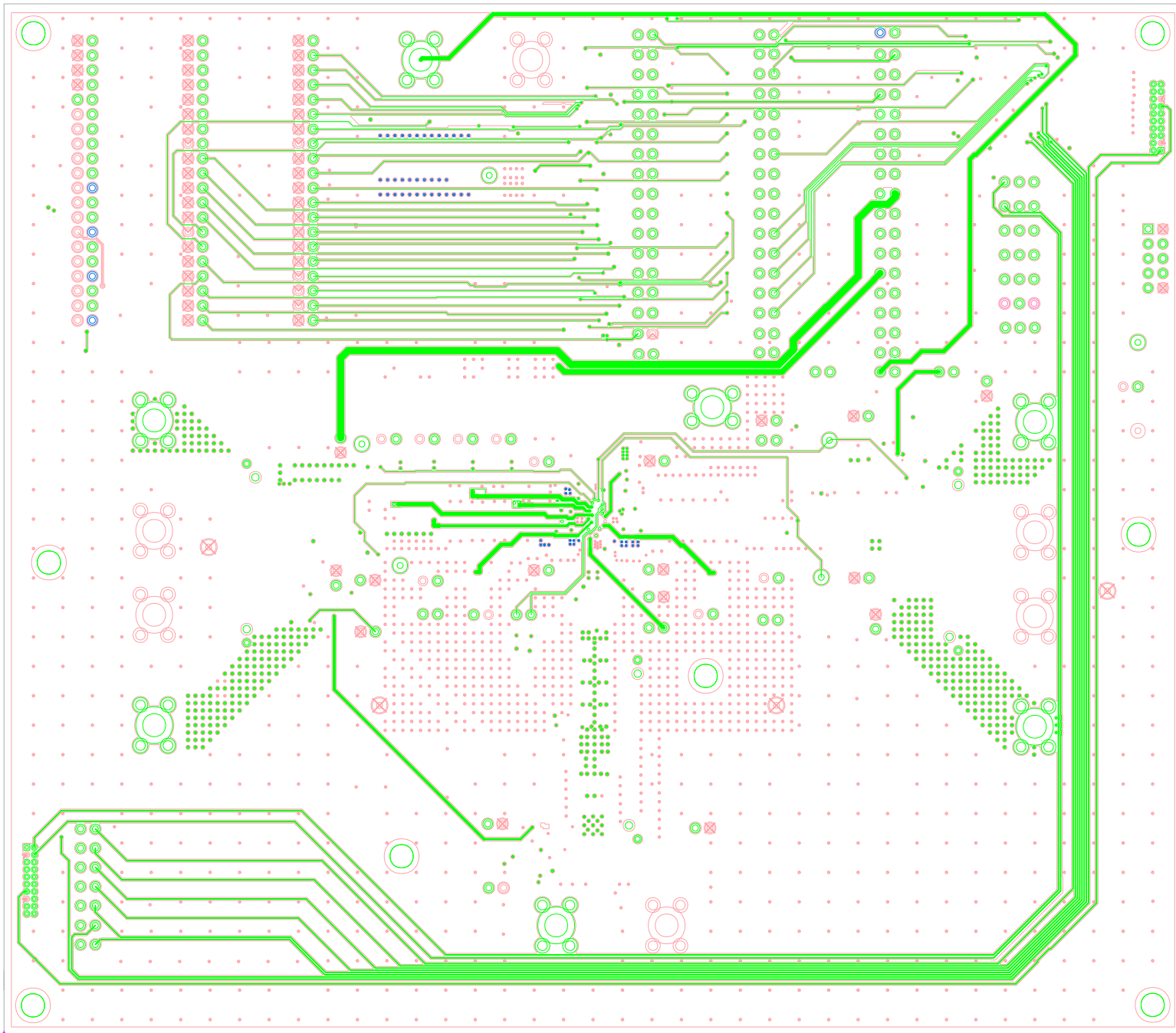
5/17/2022  
RTKA271005DE0000BU  
REV C



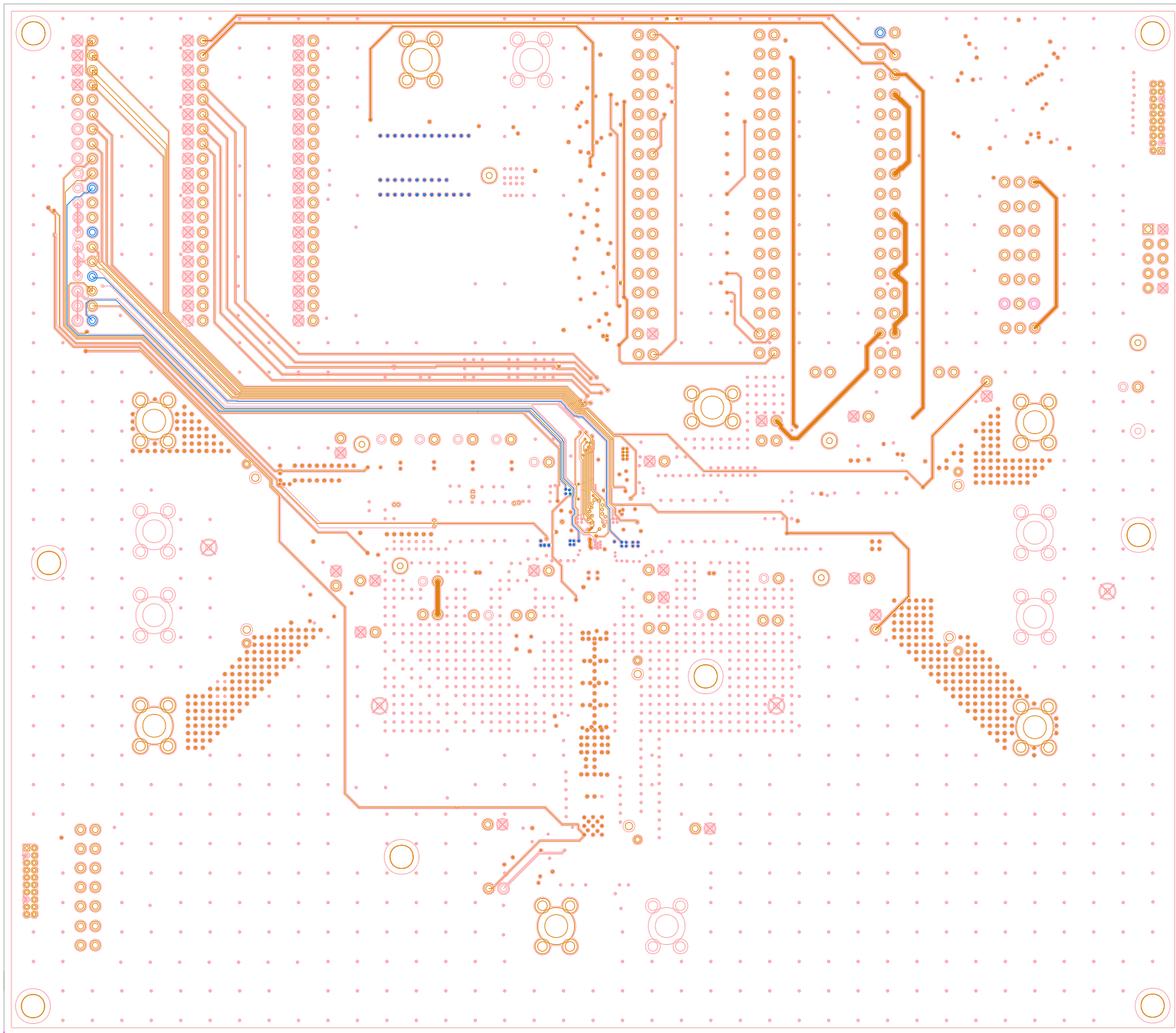
5/17/2022  
RTKA271005DE0000BU  
REV C



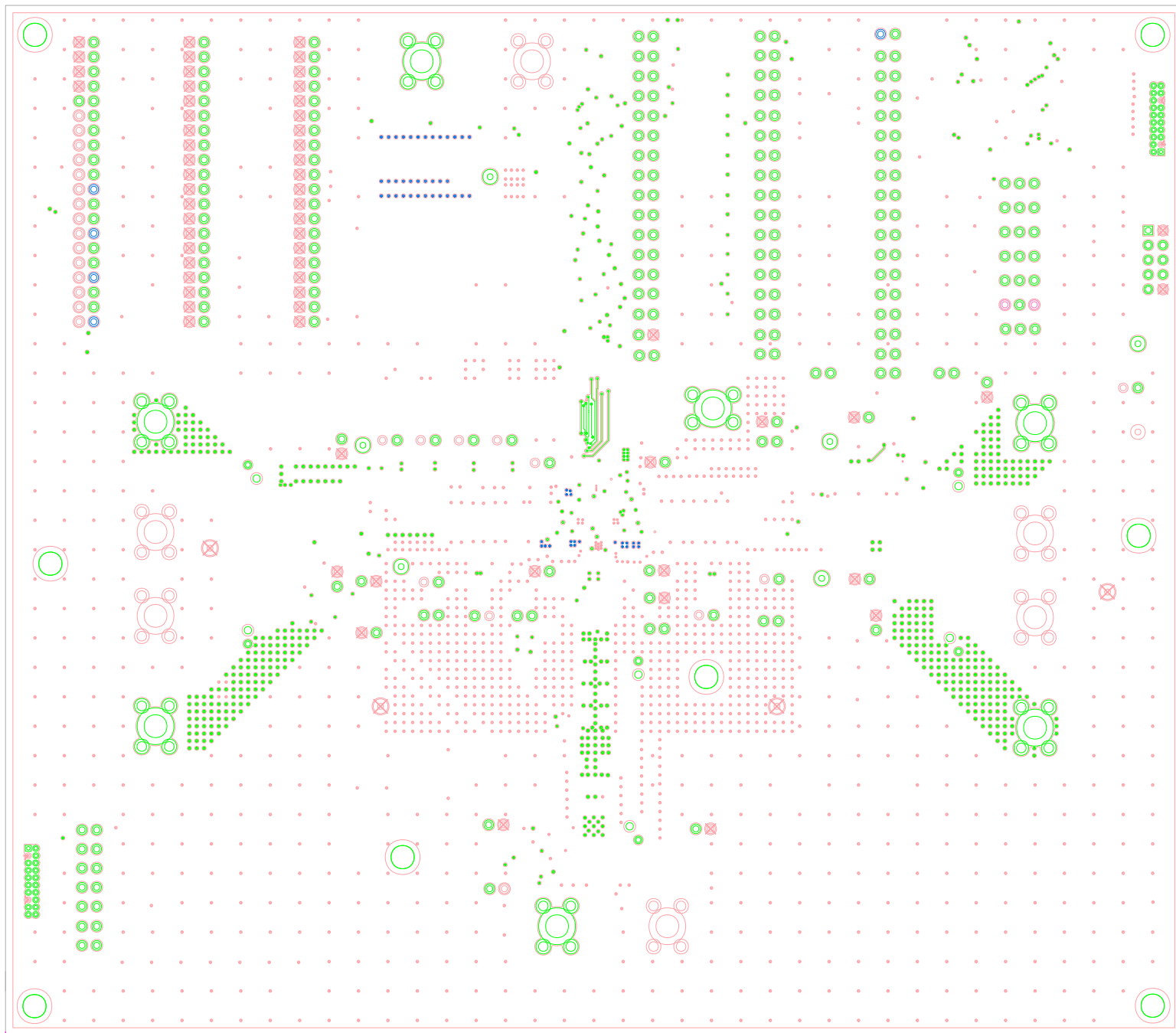
5/17/2022  
RTKA271005DE0000BU  
REV C



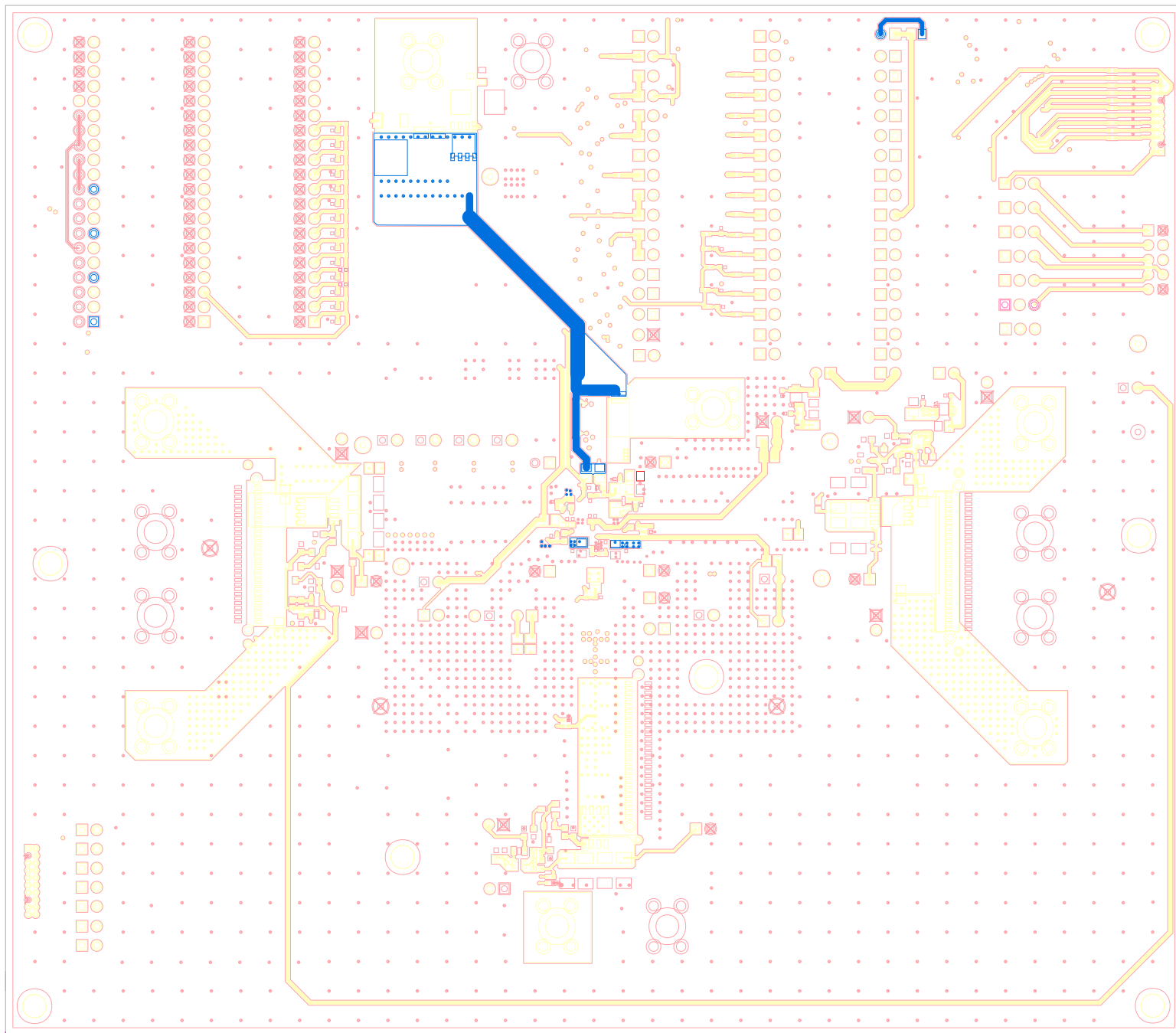
5/17/2022  
RTKA271005DE0000BU  
REV C



5/17/2022  
RTKA271005DE0000BU  
REV C

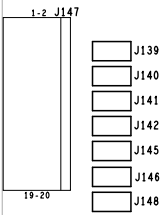
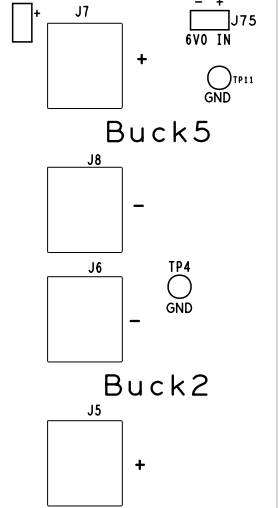
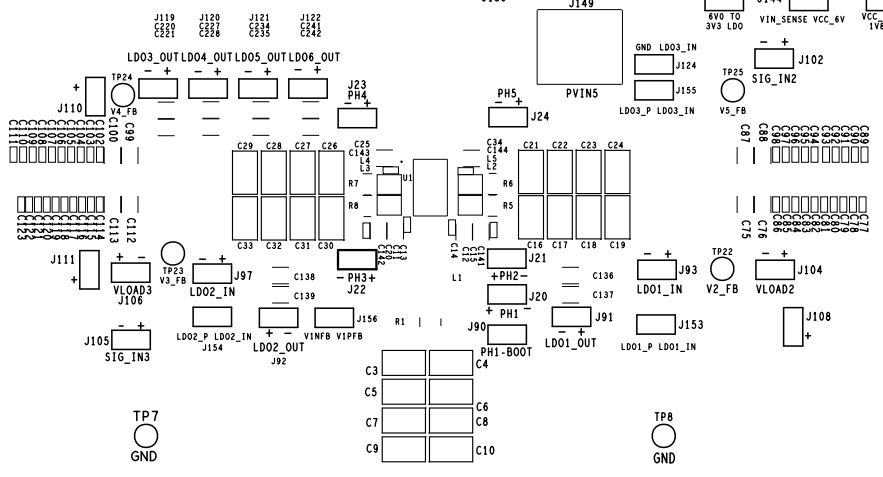
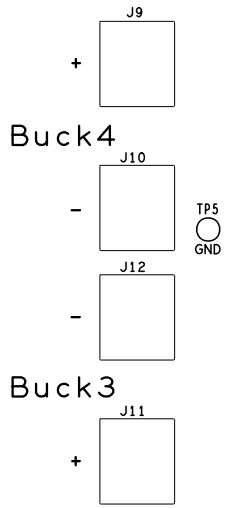
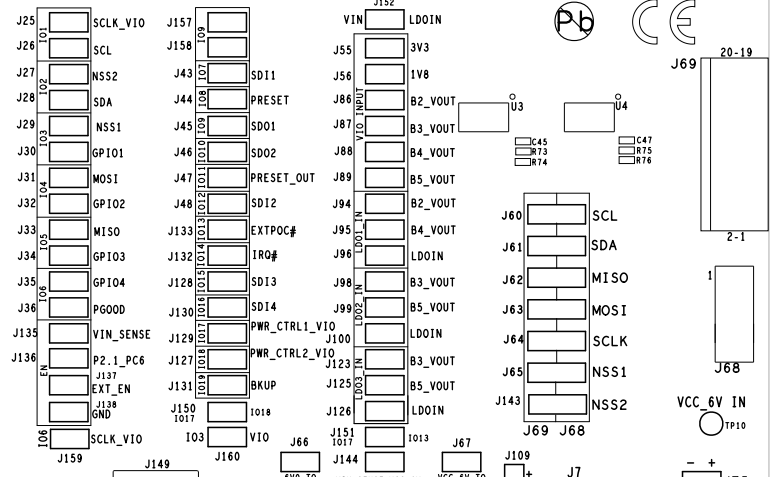
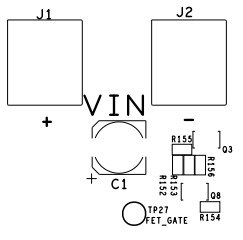


5/17/2022  
RTKA271005DE0000BU  
REV C



5/17/2022  
RTKA271005DE0000BU  
REV C

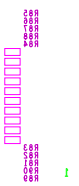
LD02_GND	LD02_OUT	GND	LD0_3V3	GND	
LD01_GND	LD02_IN	GND	LD0_1V8	GND	I019
LD01_GND	LD01_OUT	GND		GND	I018
	LD01_IN	GND	LD06_OUT	GND	I017
		GND	LD05_OUT	GND	I016
B5_PGND	B5_VOUT	GND	LD04_OUT	GND	I015
B5_PGND	B5_MEAS	GND	LD03_OUT	GND	I014
B5_PGND	B5_PVIN	GND	LD03_IN	GND	I013
B4_PGND	B4_VOUT	GND	ADC5	GND	I012
B4_PGND	B4_MEAS	GND	ADC4	GND	I011
B4_PGND	B4_PVIN	GND	ADC3	GND	I010
B3_PGND	B3_VOUT	GND	ADC2	GND	I09
B3_PGND	B3_MEAS	GND	ADC1	GND	I08
B3_PGND	B3_PVIN	GND	GC	GND	I07
B2_PGND	B2_VOUT	GND	VIN_SENSE	GND	I06
B2_PGND	B2_MEAS	GND	VDD_6V	GND	I05
B2_PGND	B2_PVIN	GND	EN	GND	I04
B1_PGND	B1_VOUT	GND	VIO	GND	I03
B1_PGND	B1_MEAS	GND	AVIN2	GND	I02
B1_PGND	B1_PVIN	GND	AVIN1	GND	I01



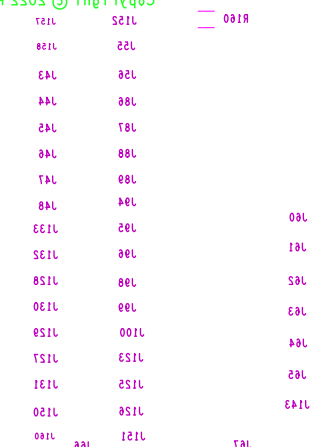
**RENESAS**  
**RTKA271005DE000BU**  
**REV C**

Copyright © 2022 Renesas Electronics Corporation

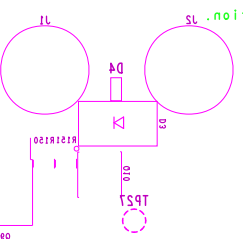
RTKAS10PDE0000BA REV C GENESYS



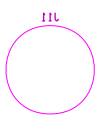
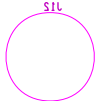
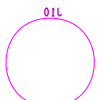
R180



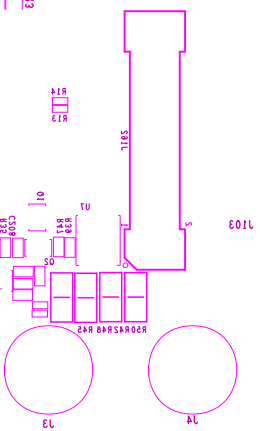
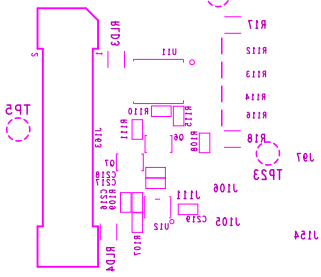
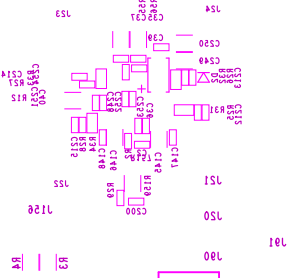
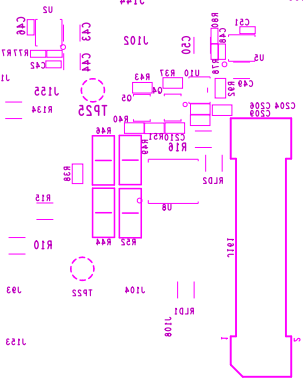
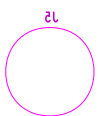
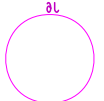
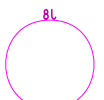
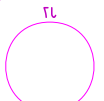
Copyright © SSS Reseas Electronics Corporation

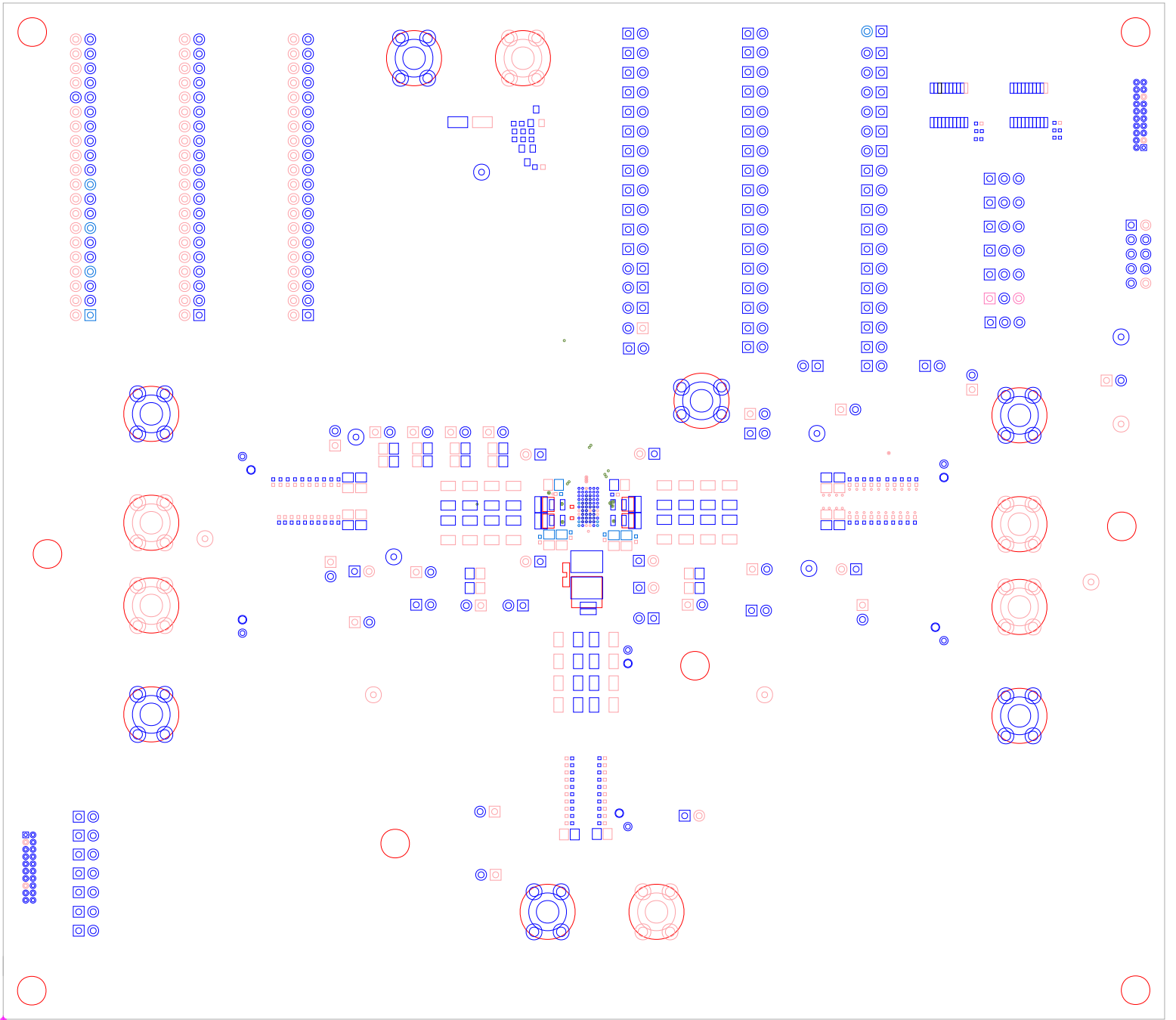


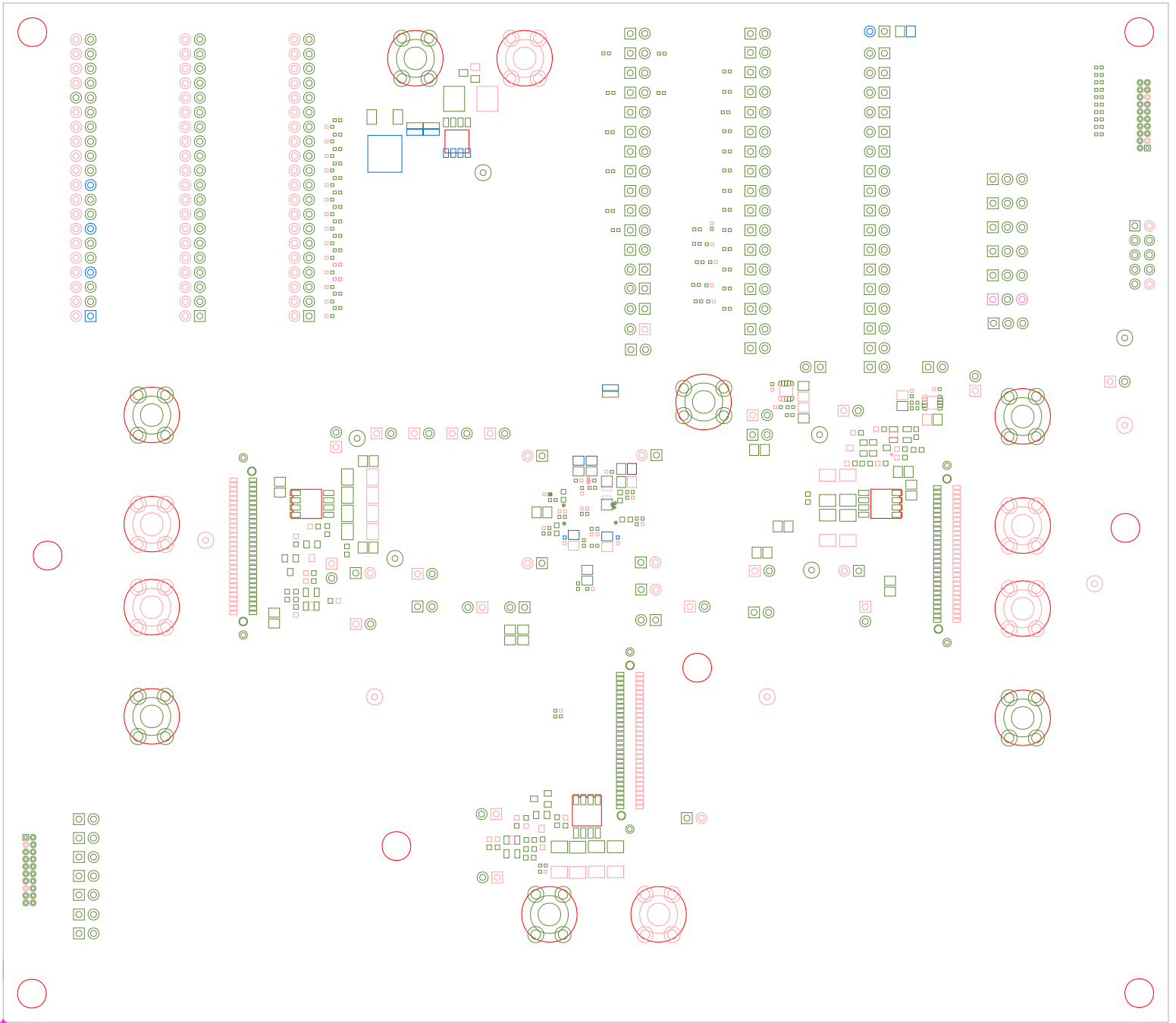
118  
117

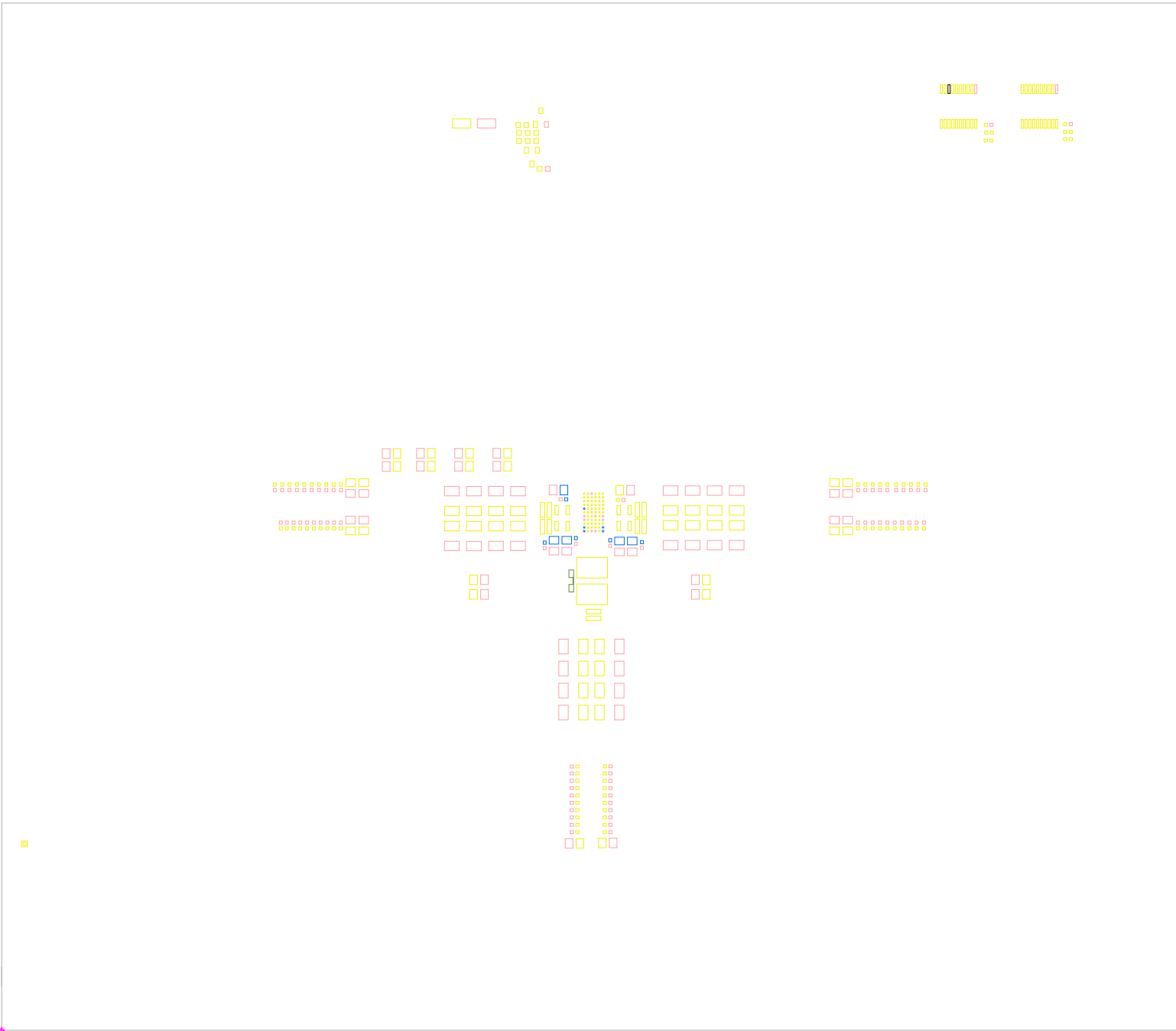


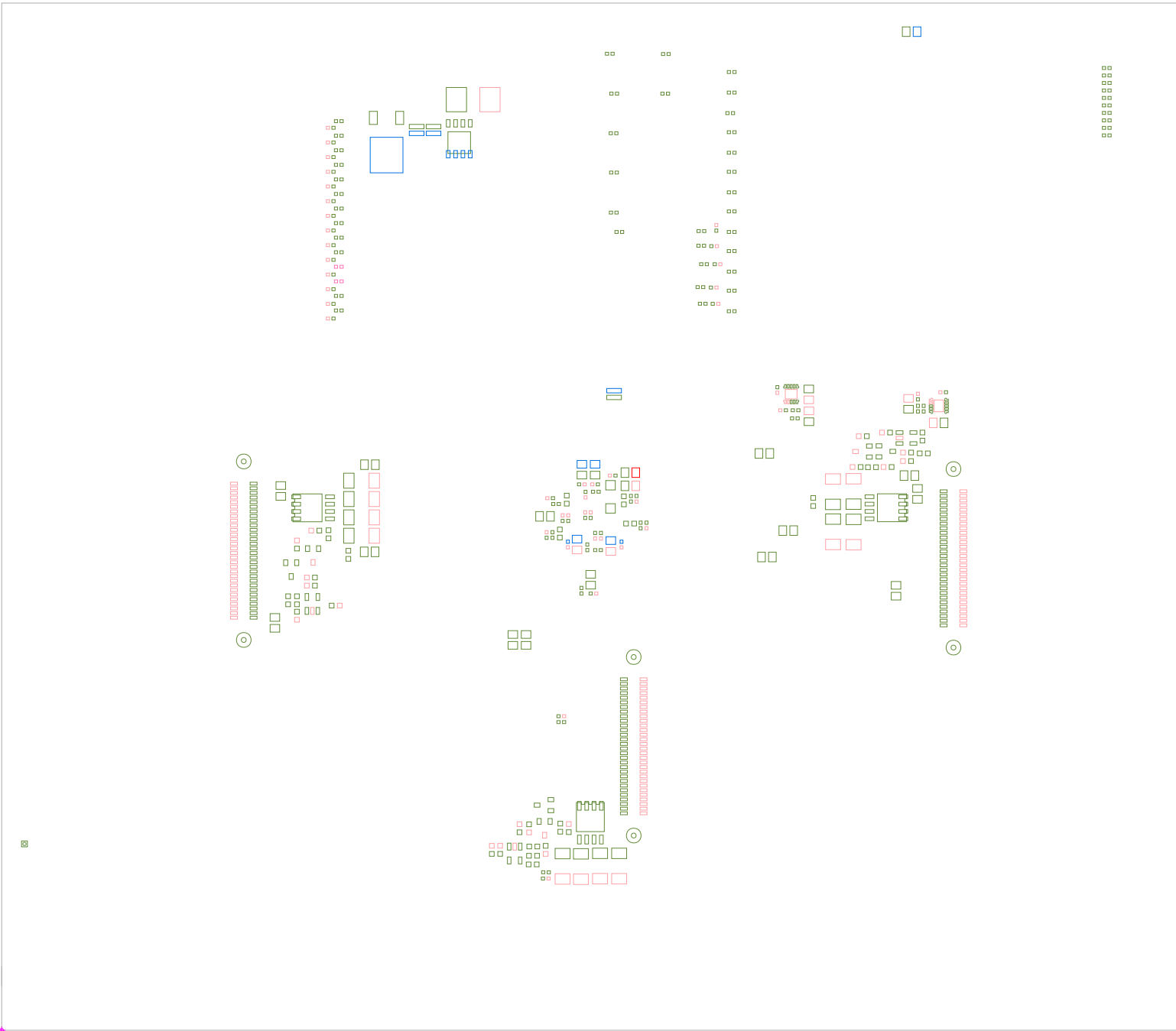
1130  
1140  
1141  
1145  
1146  
1148



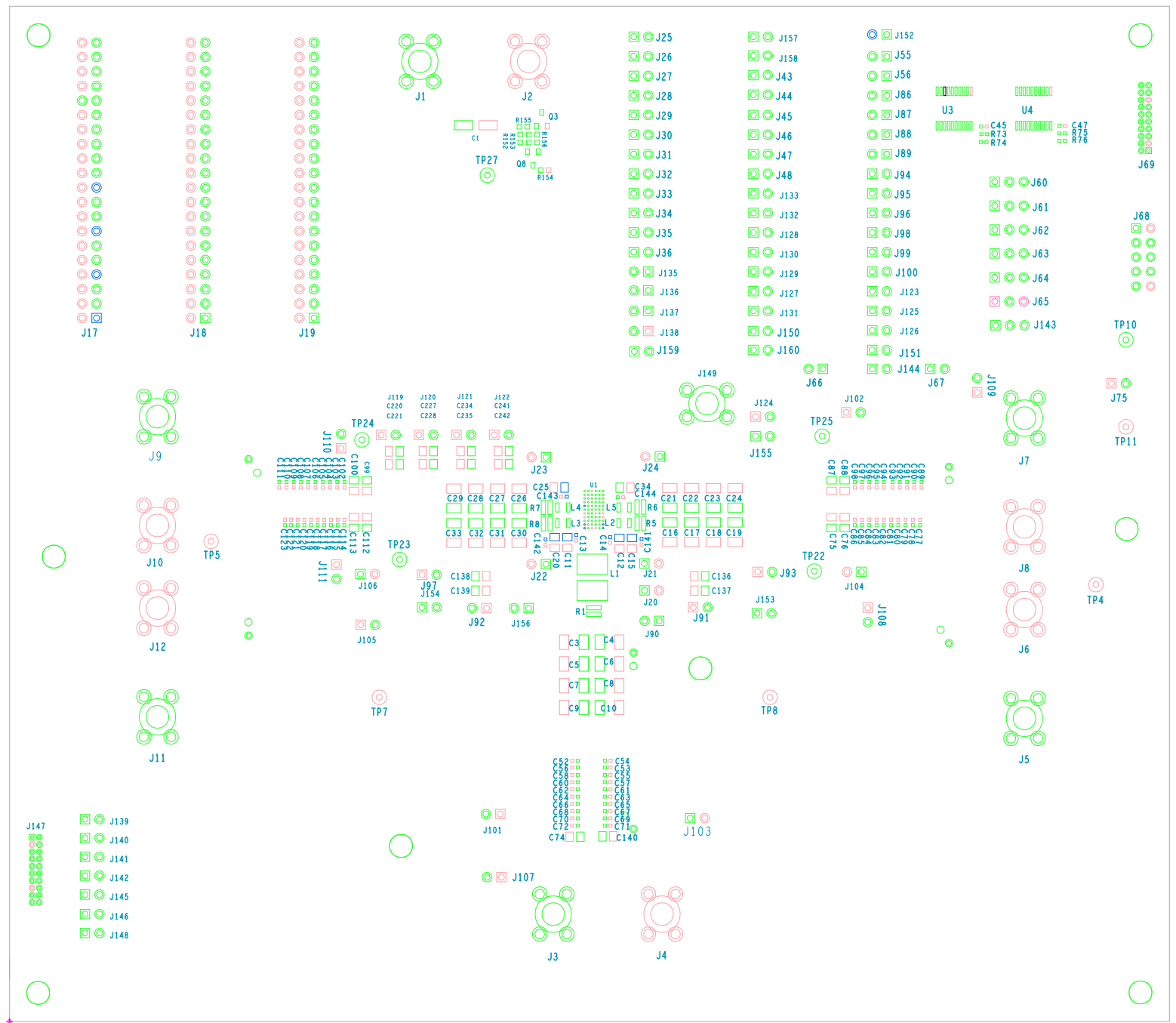






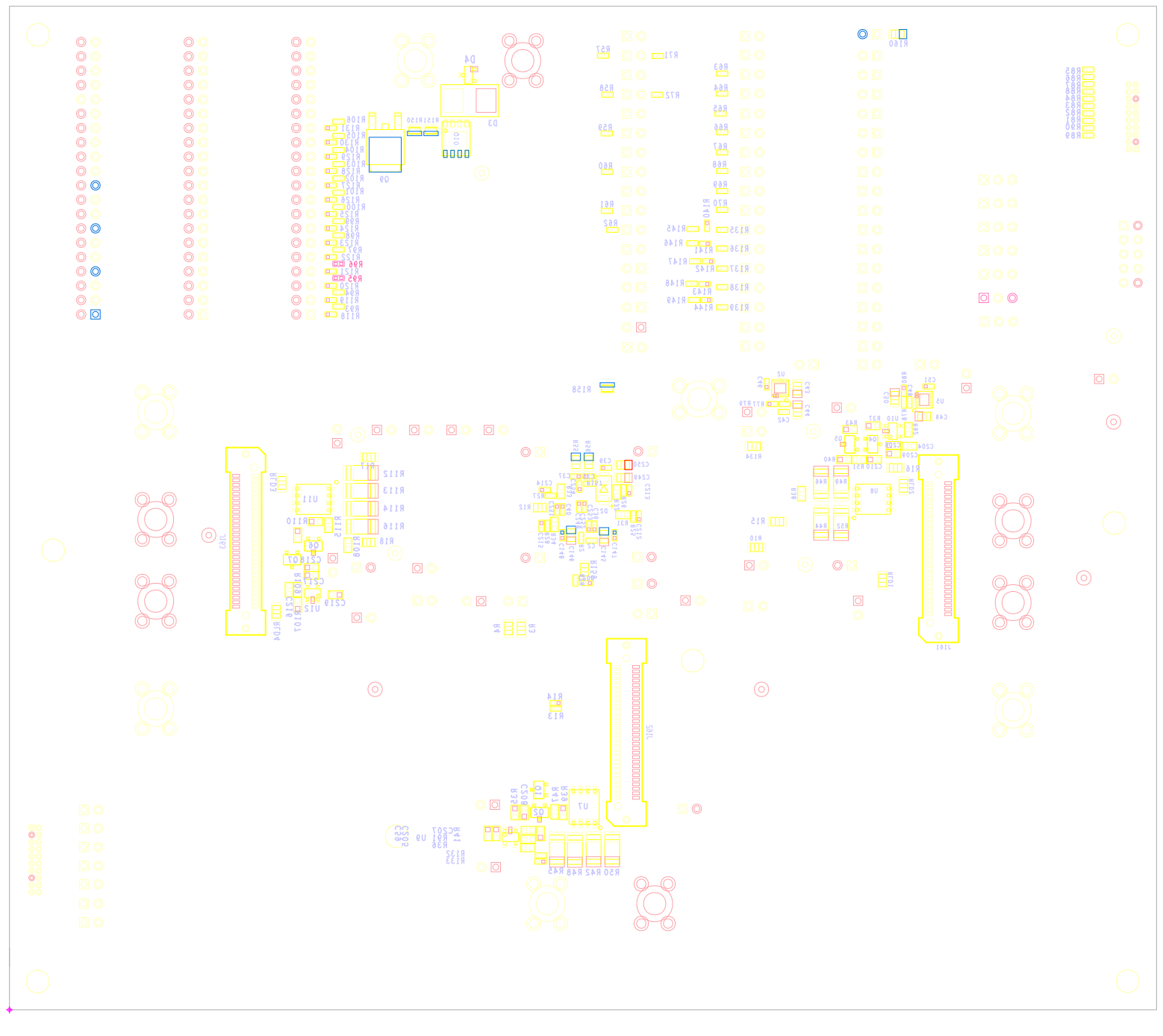


7000



8000

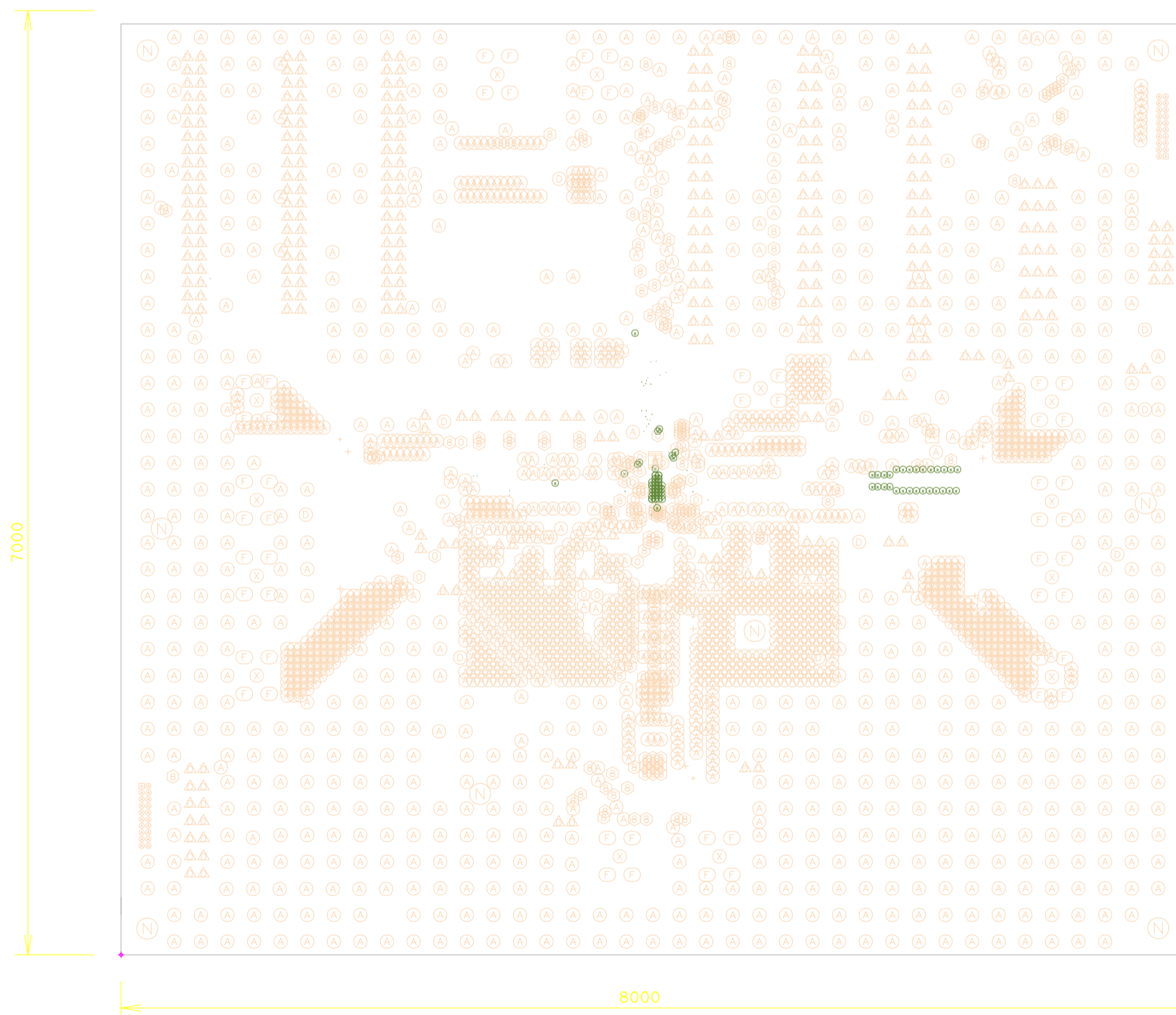
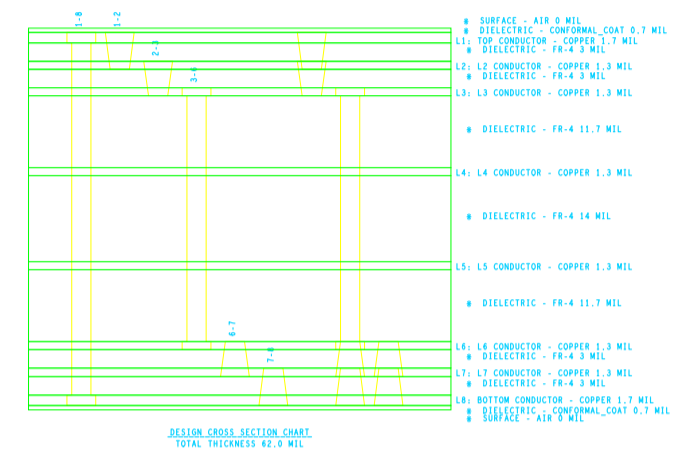
7000



8000

## NOTES:

1. THIS BOARD IS RoHS COMPLIANT.
2. PRINTED WIRING BOARD DESIGN AND ACCEPTANCE CRITERIA SHALL BE IAW WITH THE REQUIREMENTS OF IPC-D-275 AND IPC-A-600.
3. MATERIAL: FR4 TG170 (RoHS COMPLIANT), 1 OZ COPPER.
4. APPLY SOLDER MASK, BOTH SIDES OVER BARE COPPER IAW IPC-SM-840. CLASS 2 (LPI) (RENESAS BLUE MASK).
5. ALL PATTERNS ARE VIEWED FROM THE PRIMARY SIDE LOOKING THROUGH THE BOARD.
6. UNLESS OTHERWISE SPECIFIED ALL HOLE DIAMETERS ARE AFTER PLATING.
7. APPLY SILKSCREEN USING WHITE NON-CONDUCTIVE EPOXY BASED INK.
8. PWB MUST BE 100% ELECTRICALLY TESTED FOR SHORTS AND CONTINUITY. USE NETLIST PROVIDED RTKA271000E00000BU\_IPC356.IPC IAW IPC-D-356.
9. MARK DATE CODE AND MANUFACTURES IDENIFICATION ON BOTTOM SIDE PER IPC-6011 AND IPC-6012.
- 10 TOLERANCE ON ALL DRILL HOLES SHALL BE IAW IPC-D-2221 & 2222
11. ALL 8 MIL VIAS ARE TO BE NON-CONDUCTIVE EPOXY FILLED AND CAPPED.



DRILL CHART: TOP to L2				
ALL UNITS ARE IN MILS				
FIGURE	SIZE	PLATED	NONSTANDARD	QTY
⊙	5.0	PLATED	-	67
DRILL CHART: L2 to L3				
ALL UNITS ARE IN MILS				
FIGURE	SIZE	PLATED	NONSTANDARD	QTY
⊙	5.0	PLATED	-	18
DRILL CHART: L3 to L6				
ALL UNITS ARE IN MILS				
FIGURE	SIZE	PLATED	NONSTANDARD	QTY
⊙	6.0	PLATED	LASER	28
DRILL CHART: L6 to L7				
ALL UNITS ARE IN MILS				
FIGURE	SIZE	PLATED	NONSTANDARD	QTY
⊙	4.0	PLATED	LASER	27
DRILL CHART: L7 to BOTTOM				
ALL UNITS ARE IN MILS				
FIGURE	SIZE	PLATED	NONSTANDARD	QTY
⊙	4.0	PLATED	LASER	20
DRILL CHART: TOP to BOTTOM				
ALL UNITS ARE IN MILS				
FIGURE	SIZE	PLATED	NONSTANDARD	QTY
A	6.0	PLATED	-	4
⊙	8.0	PLATED	-	78
B	8.0	PLATED	-	126
A	10.0	PLATED	-	2114
*	23.0	PLATED	-	38
⊙	23.0	PLATED	-	2
+	33.07	PLATED	-	6
⊙	40.0	PLATED	-	11
△	41.0	PLATED	-	335
F	65.0	PLATED	-	52
X	155.0	PLATED	-	13
+	50.0	NON-PLATED	-	6
N	157.48	NON-PLATED	-	8